

FERMOB LIGHTING & MOON!

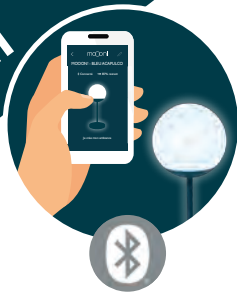


App only compatible with smartphones.

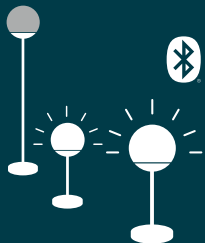


**Scan me
and download the
FERMOB LIGHTING APP**

Bluetooth®



THE FERMOb LIGHTING APP GIVES YOU SUPERPOWERS!



CONTROL ONE OR MORE LAMPS REMOTELY
(RANGE : 20 METERS, DISTANCE : 1 KM)



VARY BRIGHTNESS AND COLOUR TEMPERATURE



TRACK BATTERY LIFE IN REAL TIME



NEW

CUSTOMISATION | TIMER
CONFIGURE CUSTOM LIGHTING MOODS AND SET THE LAMP TO SWITCH OFF AUTOMATICALLY.



NEW

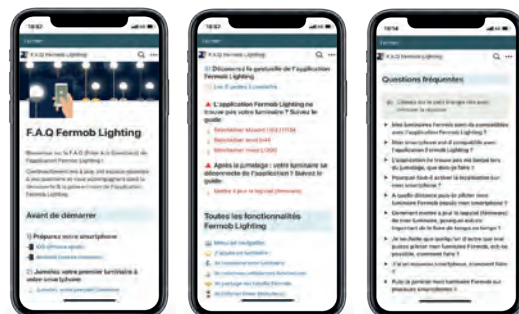
GROUPS
CREATE AND MANAGE GROUPS OF LAMPS.



THE FERMOb LIGHTING APP MAKES EVERY FERMOb LAMP UNIQUE, ALLOWING YOU TO EASILY CONFIGURE CUSTOM LIGHTING MOODS.



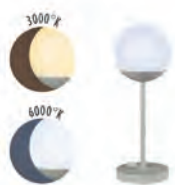
Any questions?
Go to the FERMOb Lighting FAQ
on www.fermob.com.



MOON!

5303 - LAMP H.41 CM
DESIGN BY TRISTAN LOHNER

DOMESTIC | PROFESSIONAL | INTENSIVE



Polyethylene diffuser

Aluminium frame

ABS base

Technology : integrated LED - Luminous flux : 150 lm

Switch type : dimmer

Function of the switch : change the brightness (10 to 100%, click 4 s),
change the light temperature (double short click), ON/OFF (short click, 1s)

Lighting mood :

Position 1 cool white (6000°K) dimmer switch (10 to 100%)

Position 2 warm white (3000°K) dimmer switch (10 to 100%)

Type of power supply : battery - Battery life : Min. (100%) 8 h - Max. 16 h

Battery use cycles : 300 cycles

Recharge time : 7h - Type of recharge : USB, cable (supplied) 2m

Bypass to prevent battery damage during wired use

2 A - 5 V - 2.5 W - IP44 (ingress protection) | IK 10 (impact resistance) | CE | FCC | UKCA

Energy rating : F

Powered by Smart & Green



0.7 kg

530382 ● Cactus

530373 ● Honey

530314 ● Nutmeg

530347 ● Anthracite

530321 ● Acapulco Blue

530320 ● Red Ochre

5303A5 ● Clay Grey

5303B9 ● Black Cherry

NEW



NEW



Fermob
magnet



- New charging system
- Practical & easy to use
- Identifiable (due to samara)

MOON!

5320 - LAMP H.63 CM
DESIGN BY TRISTAN LOHNER

DOMESTIC | PROFESSIONAL | INTENSIVE



Polyethylene diffuser
Aluminium frame
ABS base

Technology : integrated LED - Luminous flux : 500 lm

Switch type : touch-activated

Function of the switch : change the light temperature (long click, 3 s),
change the brightness (short click, 1 s), Reset Bluetooth pairing
(click and hold for 10 s)

Lighting mood :

Position 1 cool white (6000°K) 50% brightness

Position 2 cool white (6000°K) 100% brightness

Position 3 warm white (3000°K) 50% brightness

Position 4 warm white (3000°K) 100% brightness

Lighting scenario via Bluetooth :

Cool white (6000°K) dimmer switch (10 to 100%)

Warm white (3000°K) dimmer switch (10 to 100%)

Type of power supply : battery - Battery life : Min. (100%) 7 h - Max. 13 h

Battery use cycles : 300 cycles

Recharge time : 4h - Type of recharge : ABS plastic charging base & transformer

110-230 Apv* - 24 Dpv** IPX0, powered by mains electricity - Cable (supplied) 1.5 m

Plug type : 4 plugs multi-type (J, K, G, F, L, E, B, I)

Bypass to prevent battery damage during wired use

1.5 A - 24 V - 7 W - IP44 (ingress protection) | IK 10 (impact resistance) | CE | FCC

Energy rating : F

Powered by Smart & Green

Compatible with :

SMART SWITCH - LUDO



2.65 kg

- 532082 ● Cactus
- 5320B9 ● Black Cherry
- 532047 ● Anthracite

NEW

- 532021 ● Acapulco Blue
- 532020 ● Red Ochre



MOON! H.63 & 134 CM, BELLEVIE & ÉVASION



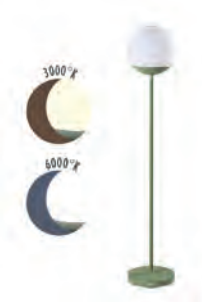
MOON! H.41 CM & IOS

* Alternating power volt / **Direct power volt

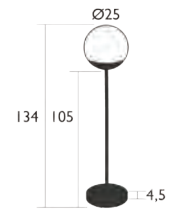
MOON!

5310 - LAMP H.134 CM
DESIGN BY TRISTAN LOHNER

DOMESTIC PROFESSIONAL INTENSIVE



Polyethylene diffuser
Aluminium frame
ABS base
Technology : integrated LED - Luminous flux : 500 lm
Switch type : touch-activated
Function of the switch : change the light temperature (long click, 3 s), change the brightness (short click, 1 s), Reset Bluetooth pairing (click and hold for 10 s)



5.4 kg

Lighting mood :

- Position 1 cool white (6000°K) 50% brightness
- Position 2 cool white (6000°K) 100% brightness
- Position 3 warm white (3000°K) 50% brightness
- Position 4 warm white (3000°K) 100% brightness

Lighting scenario via Bluetooth :

- Cool white (6000°K) dimmer switch (10 to 100%)
- Warm white (3000°K) dimmer switch (10 to 100%)

Type of power supply : battery - Battery life : Min. (100%) 7 h - Max. 13 h

Battery use cycles : 300 cycles

Recharge time : 4h - Type of recharge : ABS plastic charging base & transformer

I 10-230 Apv* - 24 Dpv** IPX0, powered by mains electricity - Cable (supplied) 1.5 m

Plug type : 4 plugs multi-type (J, K, G, F, L, E, B, I)

Bypass to prevent battery damage during wired use

1.5 A - 24 V - 7 W - IP44 (ingress protection) | IK 10 (impact resistance) | CE | FCC

Energy rating : F

Powered by Smart & Green

Compatible with :

SMART SWITCH - LUDO

- | | |
|-----------------------|------------------------|
| 531082 ● Cactus | 531021 ● Acapulco Blue |
| 5310B9 ● Black Cherry | 531020 ● Red Ochre |
| 531047 ● Anthracite | 5310A5 ● Clay Grey |

NEW



* Alternating power volt/ **Direct power volt